



FLAT 3, 66 LANSDOWNE PLACE HOVE, BN3 1FG

Guide Price £400,000 - £425,000. Stunning second floor apartment with roof terrace.

This fantastic apartment set within an attractive and well maintained period building benefits from bright and spacious accommodation comprising; two bedrooms, kitchen, bathroom and impressive west facing lounge diner. The split level layout, tall ceilings and amount of natural light all combine to create a real sense of space throughout.

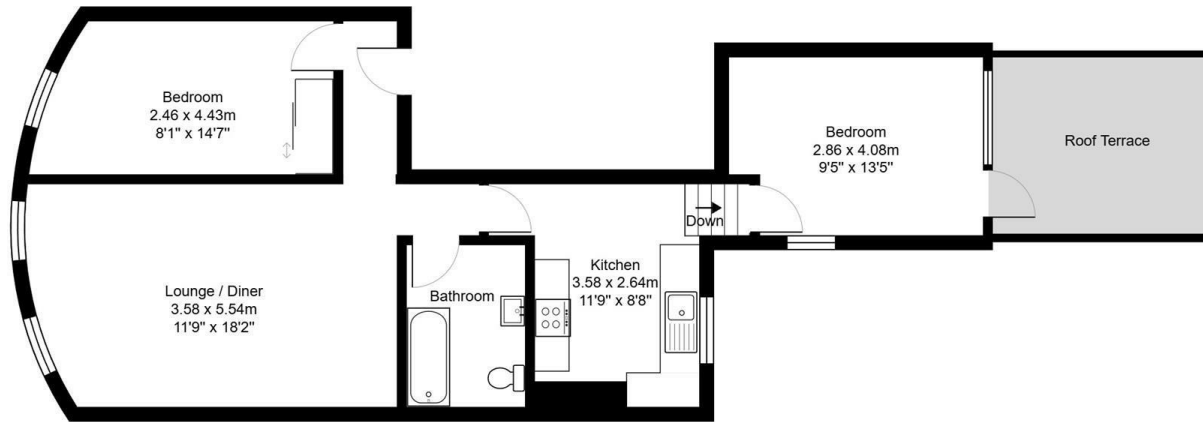
Located on the Brighton & Hove border, perfectly positioned to enjoy all the City has to offer. Popular cafes, restaurants and bars along with the seafront are all within a short walk whilst Brighton & Hove mainline stations are easily accessible providing regular and direct links to London.

Nicholas James

SALES LETTINGS AUCTIONS







66 Lansdowne Place
 Total Area: 67.1 m² ... 722 ft² Excluding Roof Terrace
 All measurements are approximate and for display purposes only.



Energy Efficiency Rating		Current	Potential
Very energy efficient - lower running costs			
(92 plus) A			
(81-91) B			
(69-80) C		71	78
(55-68) D			
(39-54) E			
(21-38) F			
(1-20) G			
Not energy efficient - higher running costs			
England & Wales		EU Directive 2002/91/EC	

Agents Note: Whilst every care has been taken to prepare these particulars, they are for guidance purposes only. All measurements are approximate and are for general guidance purposes only and whilst every care has been taken to ensure their accuracy, they should not be relied upon and potential buyers/tenants are advised to recheck the measurements

Hove Sales
 Ground Floor 8 The Drive
 Hove
 East Sussex
 BN3 3JA

01273 917915
 hello@nicholasjamesproperty.co.uk
 www.nicholasjamesproperty.co.uk

Nicholas
 James

SALES LETTINGS AUCTIONS